



*WOMEN'S COMMITTEE*

# WOMEN'S POWERLIFTING UPDATE 2021

The following statistics have been developed on basis of European's competitions data published on the EPF website.

The period considered is from 2000 till December 2021, with special focus of last ten years.

The list of the data is the following:

A. Women lifters who took part in an European competition distinguished into several kind of competition, with separated totals between powerlifting and bench press championships.

Totals are depurated of lifters that took part in more than one competition during the year.

B. Distribution for age class of women lifters considering all competition.

C. Trend of the average age.

D. Detail for 2021:

- Average age.
- Distribution for age class of women lifters in all competitions;
- Distribution for age class of women lifters for each competition;

A) NUMBERS OF WOMEN LIFTERS IN THE PERIOD 2021 – 2000

With special focus of last ten years

		2021	2020	2019	2018	2017	2016	2015	2014	2013	2012
POWERLIFTING	EQUIPPED SUB JUN, JUN & OPEN <sup>(1)</sup>	76	0	112	110	95	41	50	46	55	47
							55	47	44	58	46
	MASTER	13	0	43	43	34	37	36	43	42	37
	DANUBE CUP <sup>(2)</sup>	0	0	0	0	9	0	11	0	8	0
	WEC <sup>(3)</sup>	11	0	72	59	49	40	22	23	16	15
	CLASSIC OPEN, SUB J & JUN	190	0	204	200	140	143	120			
	CLASSIC MASTER	30	97	99	72						
<b>TOTAL (*)</b>	<b>319</b>	<b>97</b>	<b>494</b>	<b>441</b>	<b>300</b>	<b>293</b>	<b>256</b>	<b>146</b>	<b>164</b>	<b>136</b>	
BENCH PRESS	EQUIPPED OPEN, JUN & MASTER <sup>(4)</sup>	32	0	91	91	60	24	43	42	39	42
							51	56	46	37	49
	CLASSIC OPEN, SUB J, JUN & MASTER	25	0	149	127	89					
<b>TOTAL (*)</b>	<b>51</b>	<b>0</b>	<b>219</b>	<b>202</b>	<b>141</b>	<b>75</b>	<b>96</b>	<b>84</b>	<b>72</b>	<b>88</b>	
<b>TOTAL (*)</b>	<b>368</b>	<b>97</b>	<b>664</b>	<b>597</b>	<b>409</b>	<b>354</b>	<b>333</b>	<b>217</b>	<b>221</b>	<b>206</b>	

(\*) Obtained not considering lifters who took part in more than one competition during the year.

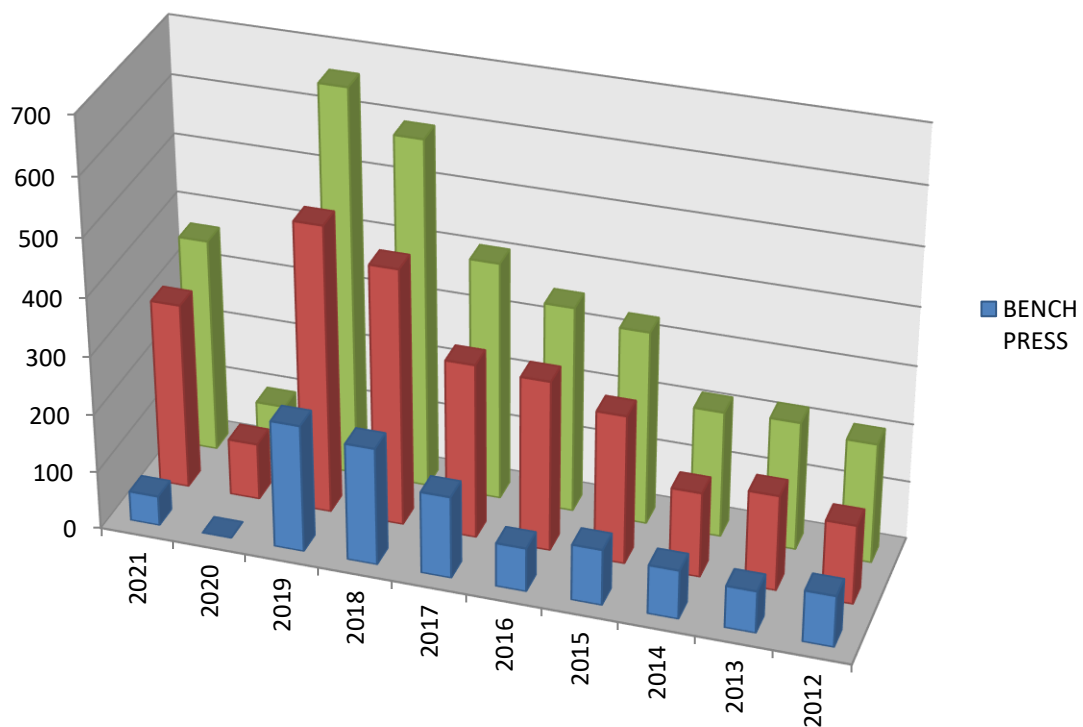
(1) Until 2016 divided into Junior and Open

(2) From 2017 Classic and Equipped

(3) From 2016 Classic and Equipped

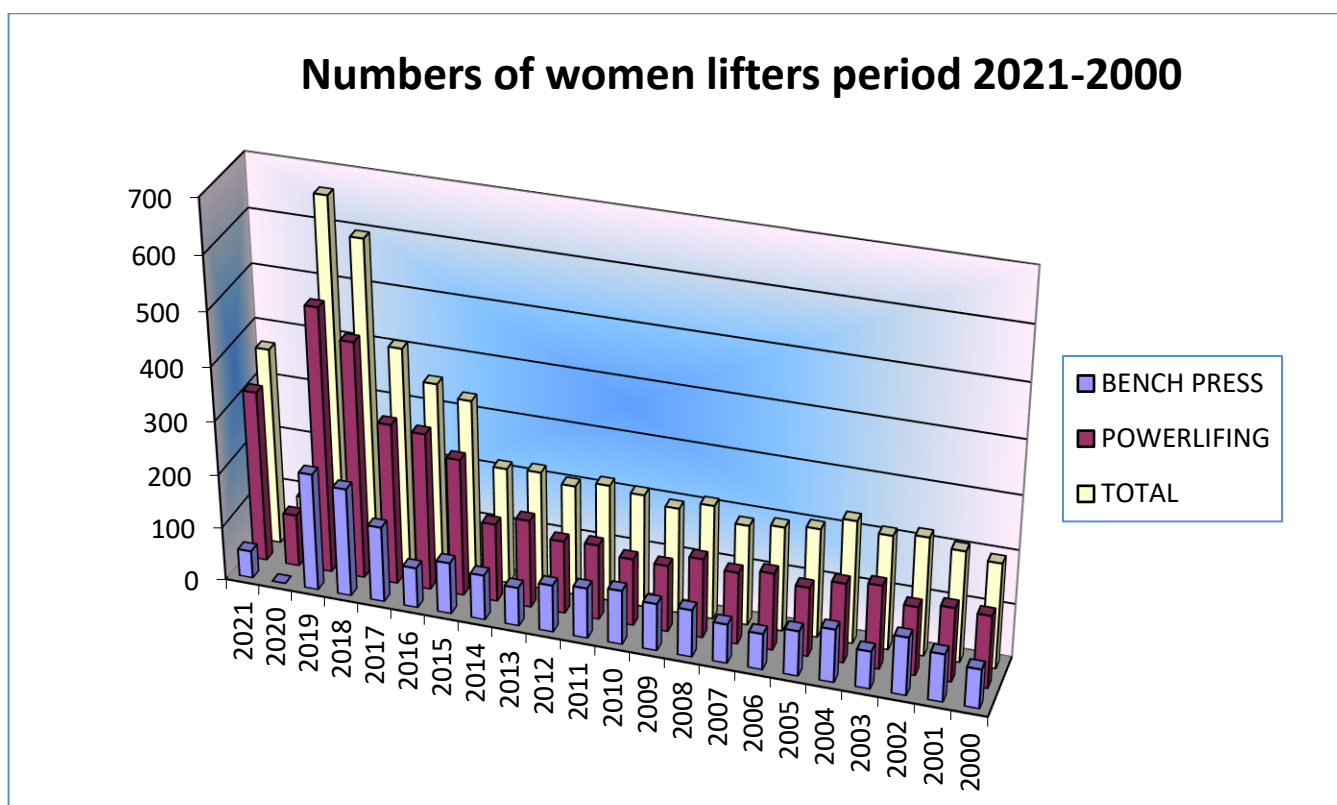
(4) Until 2016 divided into Open and Master

### Numbers of women lifters period 2021-2012



		2011	2010	2009	2008	2007	2006	2005	2004	2003	2002	2001	2000
POWERLIFTING	JUNIOR	37	31	40	40	35	48	31	42	42	47	37	43
	OPEN	58	55	40	62	59	56	66	83	69	59	52	72
	MASTER	32	28	29	36	26	30	23	25	41	16	28	25
	DANUBE CUP	2	0	8	0	12	0	12	7	19	0	17	0
	WEC	25	20	16	25	24	22	21	18	17	28	22	23
	CLASSIC												
	CLASSIC MASTER												
	TOTAL (*)	140	125	124	148	134	144	129	148	156	128	138	135
BENCH PRESS	OPEN	48	62	42	52	49	38	54	55	51	72	55	51
	MASTER	51	44	46	38	29	31	33	46	19	40	35	23
	TOTAL (*)	94	101	88	88	73	67	84	99	70	108	89	73
TOTAL (*)		218	211	197	213	187	195	203	229	213	221	207	196

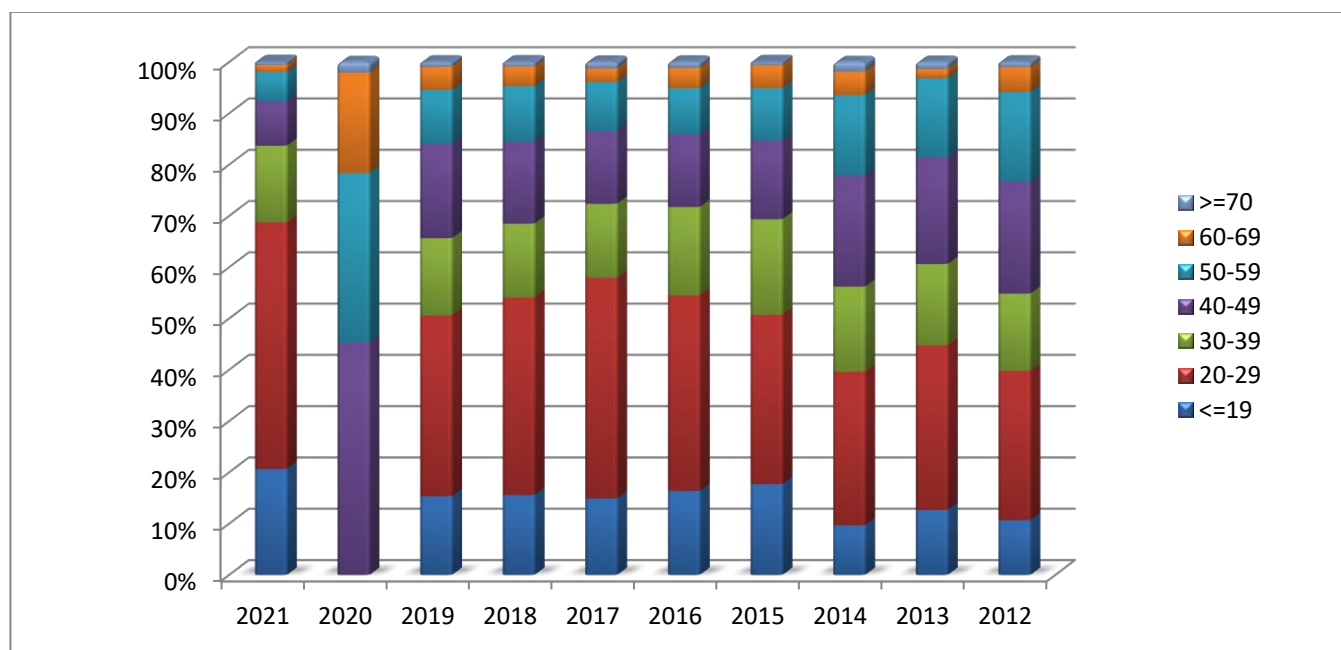
(\*) Obtained not considering lifters who took part in more than one competition during the year.



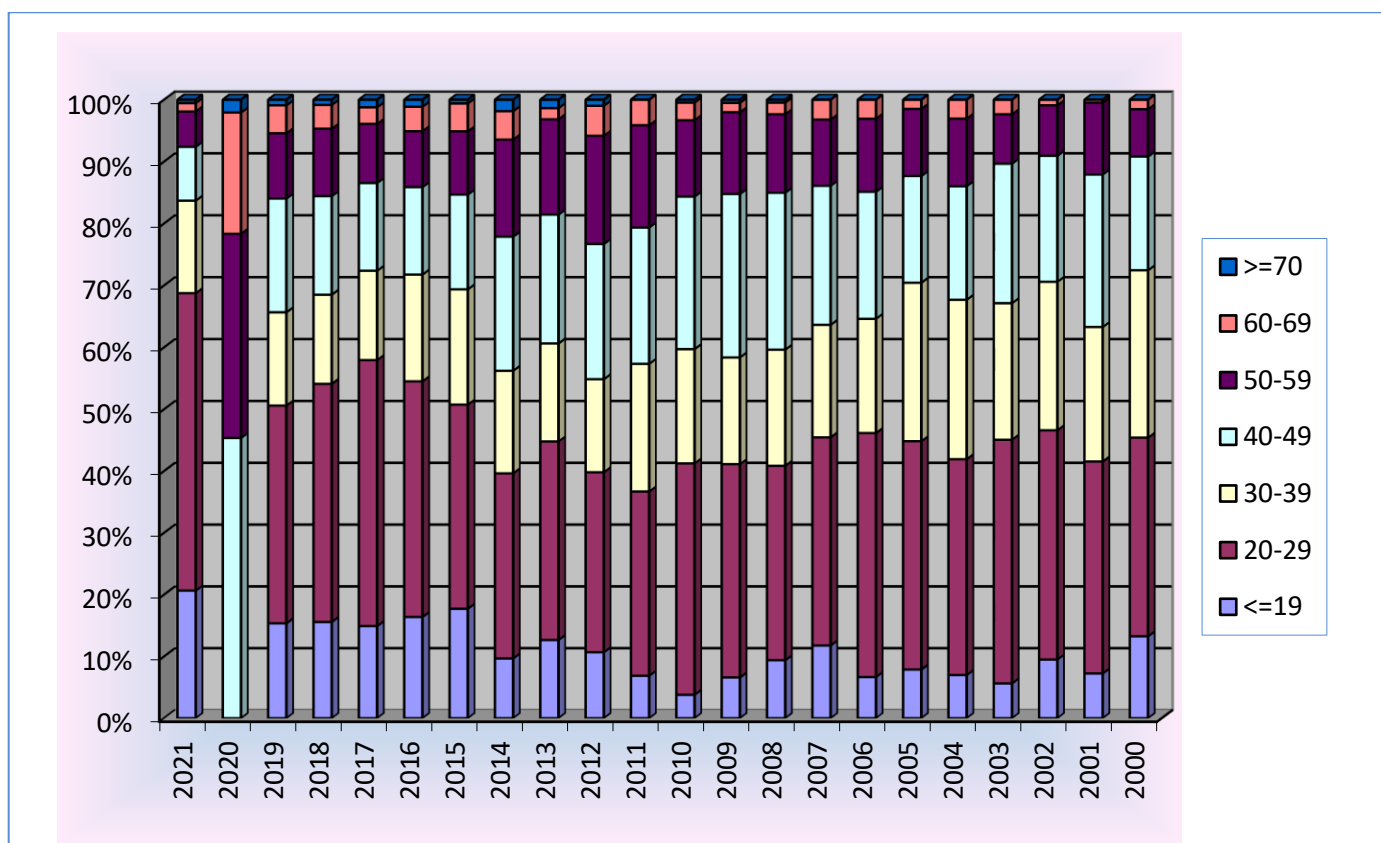
## B) DISTRIBUTION FOR AGE CLASS OF WOMEN LIFTERS

With special focus of last ten years

DISTRIBUTION FOR AGE CLASS OF WOMEN LIFTERS IN ALL EUROPEAN COMPETITION										
	2021	2020	2019	2018	2017	2016	2015	2014	2013	2012
<=19	76	0	102	93	61	58	59	21	28	22
20-29	177	0	234	230	176	135	110	65	71	60
30-39	55	0	100	86	59	61	62	36	35	31
40-49	32	44	122	95	58	50	51	47	46	45
50-59	21	32	70	65	39	32	34	34	34	36
60-69	5	19	30	23	11	14	15	10	4	10
>=70	2	2	6	5	5	4	2	4	3	2
<b>TOTAL</b>	<b>368</b>	<b>97</b>	<b>664</b>	<b>597</b>	<b>409</b>	<b>354</b>	<b>333</b>	<b>217</b>	<b>221</b>	<b>206</b>

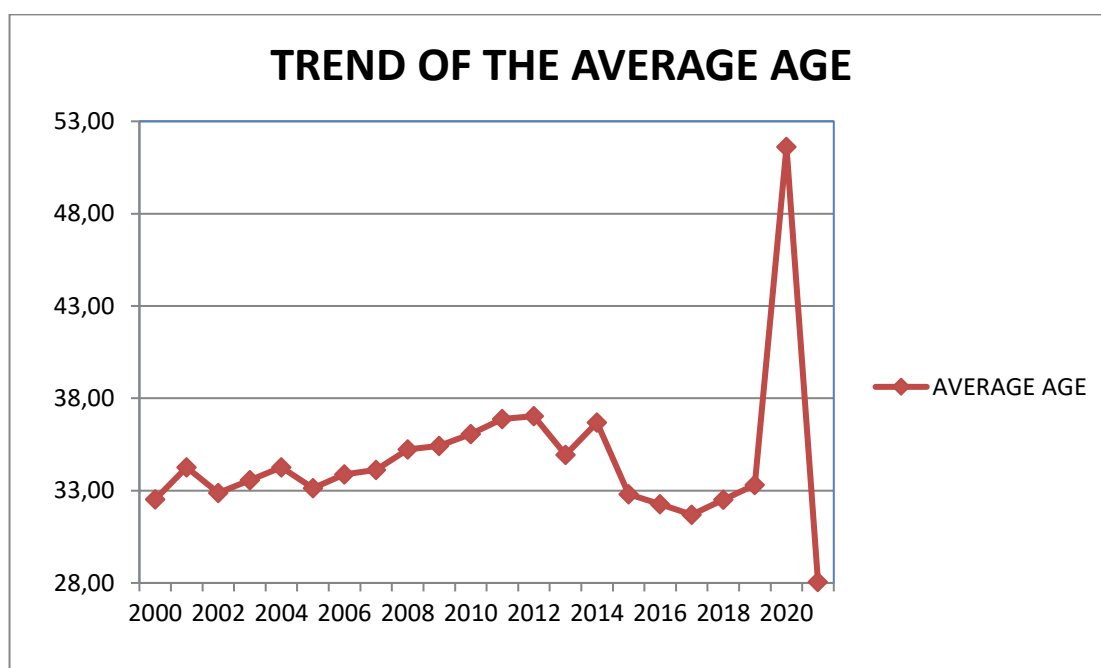


DISTRIBUTION FOR AGE CLASS OF WOMEN LIFTERS IN ALL EUROPEAN COMPETITION												
	2011	2010	2009	2008	2007	2006	2005	2004	2003	2002	2001	2000
<=19	15	8	13	20	22	13	16	16	12	21	15	26
20-29	65	79	68	67	63	77	75	80	84	82	71	63
30-39	45	39	34	40	34	36	52	59	47	53	45	53
40-49	48	52	52	54	42	40	35	42	48	45	51	36
50-59	36	26	26	27	20	23	22	25	17	18	24	15
60-69	9	6	3	4	6	6	3	7	5	2	1	3
>=70	0	1	1	1	0	0	0	0	0	0	0	0
<b>TOTAL</b>	<b>218</b>	<b>211</b>	<b>197</b>	<b>213</b>	<b>187</b>	<b>195</b>	<b>203</b>	<b>229</b>	<b>213</b>	<b>221</b>	<b>207</b>	<b>196</b>



C) TREND OF THE AVERAGE AGE

TREND OF THE AVERAGE AGE	
YEAR	AVERAGE AGE
2000	32,5255
2001	34,2609
2002	32,8778
2003	33,5728
2004	34,2533
2005	33,1429
2006	33,8718
2007	34,1230
2008	35,2394
2009	35,4213
2010	36,0574
2011	36,8848
2012	37,0388
2013	34,9367
2014	36,6866
2015	32,8018
2016	32,2627
2017	31,6944
2018	32,5176
2019	33,3102
2020	51,6186
2021	28,0598

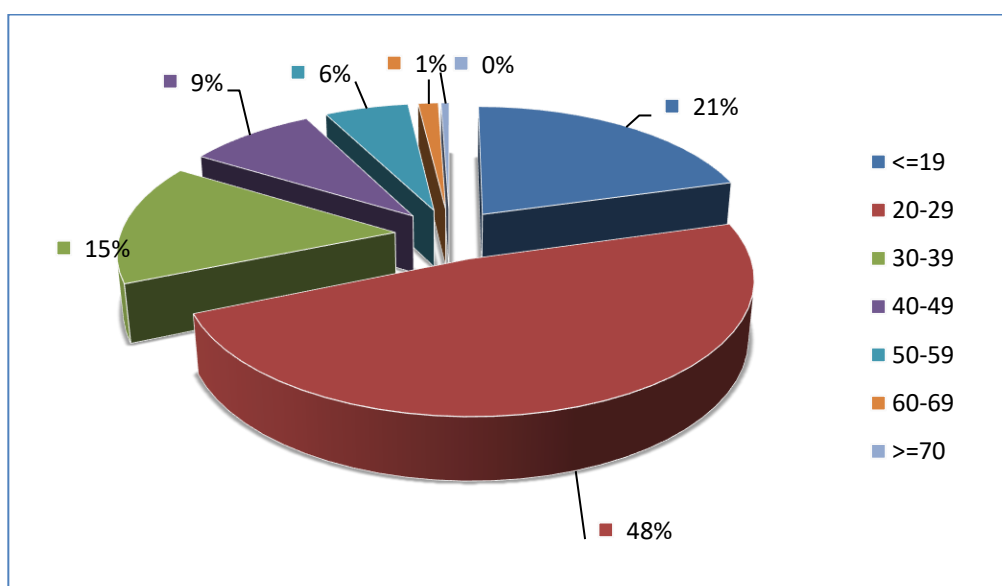




D) DETAIL FOR 2021

AVERAGE AGE: 28,0598

DISTRIBUTION FOR AGE CLASS IN ALL COMPETITIONS	
AGE CLASS	WOMEN LIFTERS
<=19	76
20-29	177
30-39	55
40-49	32
50-59	21
60-69	5
>=70	2
<b>TOTAL</b>	<b>368</b>



AGE CLASS	POWERLIFTING							BENCH PRESS		
	MASTER CLASSIC Pilsen CZE	OPEN,SUB J & JUNIOR Pilsen CZE	MASTER Pilsen CZE	DANUBE CUP	DANUBE CUP CLASSIC	WEC Hamm LUX	WEC CLASSIC Hamm LUX	OPEN,SUB J & J CLASSIC Vasteras SWE	OPEN,SUB JUN,JUN & M Ekaterinburg RUS	OPEN,SUB J,J & M CLASSIC Ekaterinburg RUS
<=19		22						38	10	7
20-29		32				6	11	121	13	9
30-39		16				3	5	29	2	2
40-49	15	4	8			1	1	1	3	2
50-59	9	2	5			1		1	4	4
60-69	4									1
>=70	2									
<b>TOTAL</b>	<b>30</b>	<b>76</b>	<b>13</b>	<b>0</b>	<b>0</b>	<b>11</b>	<b>17</b>	<b>190</b>	<b>32</b>	<b>25</b>